

Washoe County Sheriff's Office

CAB Data

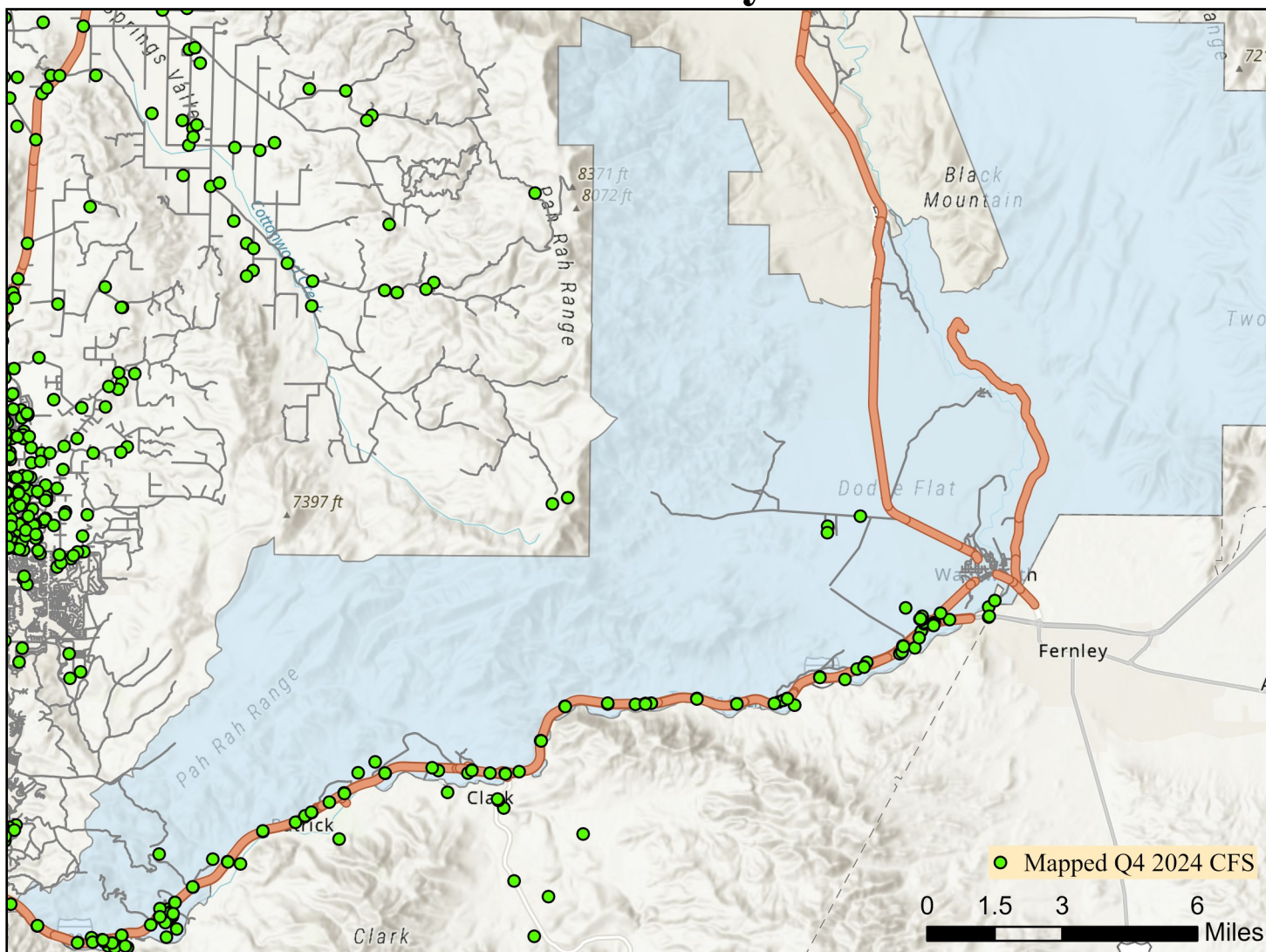
Quarter 4 2024



Note: Calls for service (CFS) and case data reflect WCSO jurisdictions. CFS and cases are mapped with useable coordinates only.

Published: 1/23/2025

East Truckee Canyon CAB

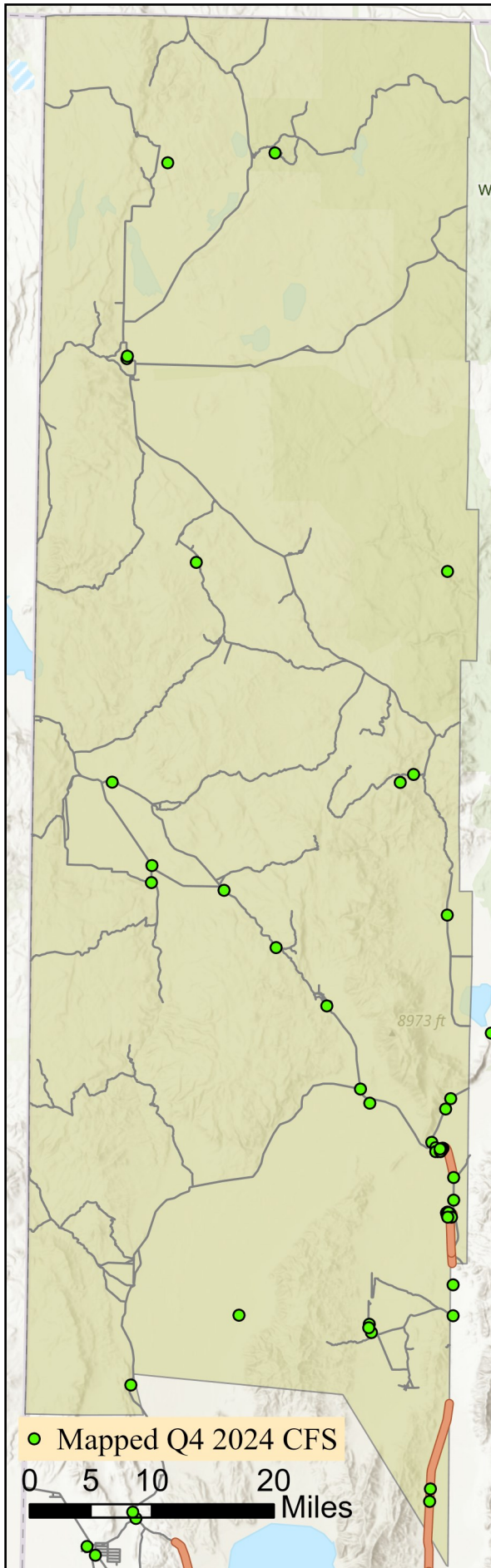


Offense Categories	Q4	3yr Avg	Up/Down
All Other Offenses	1	2	↓
Animal Cruelty	0	0	●
Arson	0	0	●
Assault Offenses	0	1	↓
Bad Checks	0	0	●
Bribery	0	0	●
Burglary	0	0	●
Counterfeiting/Forgery	0	1	↓
Curfew/Loitering/Vagrancy	0	0	●
Destruction/Damage/Vandalism	2	1	↑
Disorderly Conduct	0	0	●
Driving Under the Influence	1	0	↑
Drug Equipment Violations	0	0	●
Drug/Narcotic Violations	3	2	↑
Drunkenness	0	0	●
Embezzlement	0	0	●
Extortion/Blackmail	0	0	●
Family Offenses (Nonviolent)	0	0	●
Fraud Offenses	0	2	↓
Gambling Offenses	0	0	●

Offense Categories	Q4	3yr Avg	Up/Down
Homicide Offenses	0	0	●
Human Trafficking Offenses	0	0	●
Kidnapping/Abduction	0	0	●
Larceny/Theft Offenses	4	2	↑
Liquor Law Violations	0	0	●
Motor Vehicle Theft	0	3	↓
Peeping Tom	0	0	●
Pornography/Obscene Material	0	0	●
Prostitution Offenses	0	0	●
Robbery	0	0	●
Sex Offenses	0	0	●
Sex Offenses, Nonforcible	0	0	●
Stolen Property Offenses	0	1	↓
Trespass of Real Property	0	1	↓
Weapon Law Violations	0	2	↓
CFS Status	Q4	3yr Avg	Up/Down
Dispatched	53	45	↑
Initiated	504	249	↑
Unspecified	264	160	↑
Total	821	454	↑

Note: Initiated CFS are defined by whether the created date and time listed in the CFS match the on scene date and time entered by dispatch. Additionally, follow up and assignment CFS types are included in this category. Dispatched CFS are defined by whether an on scene time is listed in the CFS, and the CFS is not initially defined as initiated. Unspecified CFS include CFS with no on scene date and time information.

Gerlach/Empire CAB

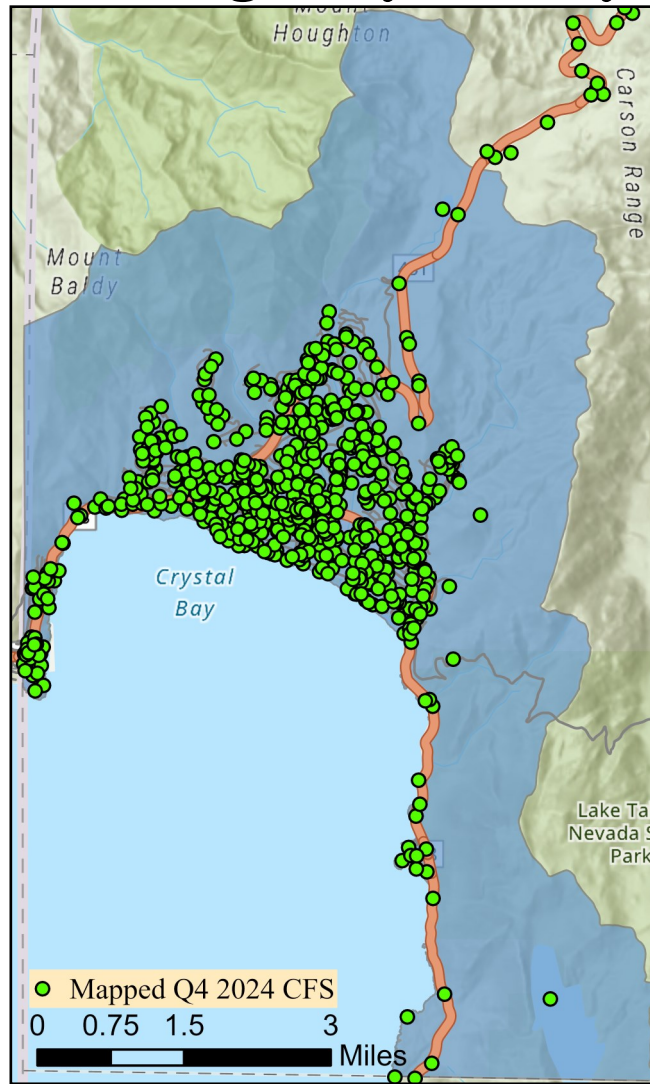


Offense Categories	Q4	3yr Avg	Up/Down
All Other Offenses	0	1	↓
Animal Cruelty	0	0	●
Arson	0	0	●
Assault Offenses	1	2	↓
Bad Checks	0	0	●
Bribery	0	0	●
Burglary	0	0	●
Counterfeiting/Forgery	0	0	●
Curfew/Loitering/Vagrancy	0	0	●
Destruction/Damage/Vandalism	0	1	↓
Disorderly Conduct	0	0	●
Driving Under the Influence	0	0	●
Drug Equipment Violations	0	0	●
Drug/Narcotic Violations	0	0	●
Drunkenness	0	0	●
Embezzlement	1	0	↑
Extortion/Blackmail	0	0	●
Family Offenses (Nonviolent)	0	1	↓
Fraud Offenses	0	0	●
Gambling Offenses	0	0	●

Offense Categories	Q4	3yr Avg	Up/Down
Homicide Offenses	0	0	●
Human Trafficking Offenses	0	0	●
Kidnapping/Abduction	0	0	●
Larceny/Theft Offenses	1	1	●
Liquor Law Violations	0	0	●
Motor Vehicle Theft	1	0	↑
Peeping Tom	0	0	●
Pornography/Obscene Material	0	0	●
Prostitution Offenses	0	1	↓
Robbery	0	0	●
Sex Offenses	1	1	●
Sex Offenses, Nonforcible	0	0	●
Stolen Property Offenses	0	0	●
Trespass of Real Property	0	1	↓
Weapon Law Violations	0	0	●
CFS Status	Q4	3yr Avg	Up/Down
Dispatched	23	24	↓
Initiated	55	216	↓
Unspecified	35	28	↑
Total	113	268	↓

Note: Initiated CFS are defined by whether the created date and time listed in the CFS match the on scene date and time entered by dispatch. Additionally, follow up and assignment CFS types are included in this category. Dispatched CFS are defined by whether an on scene time is listed in the CFS, and the CFS is not initially defined as initiated. Unspecified CFS include CFS with no on scene date and time information.

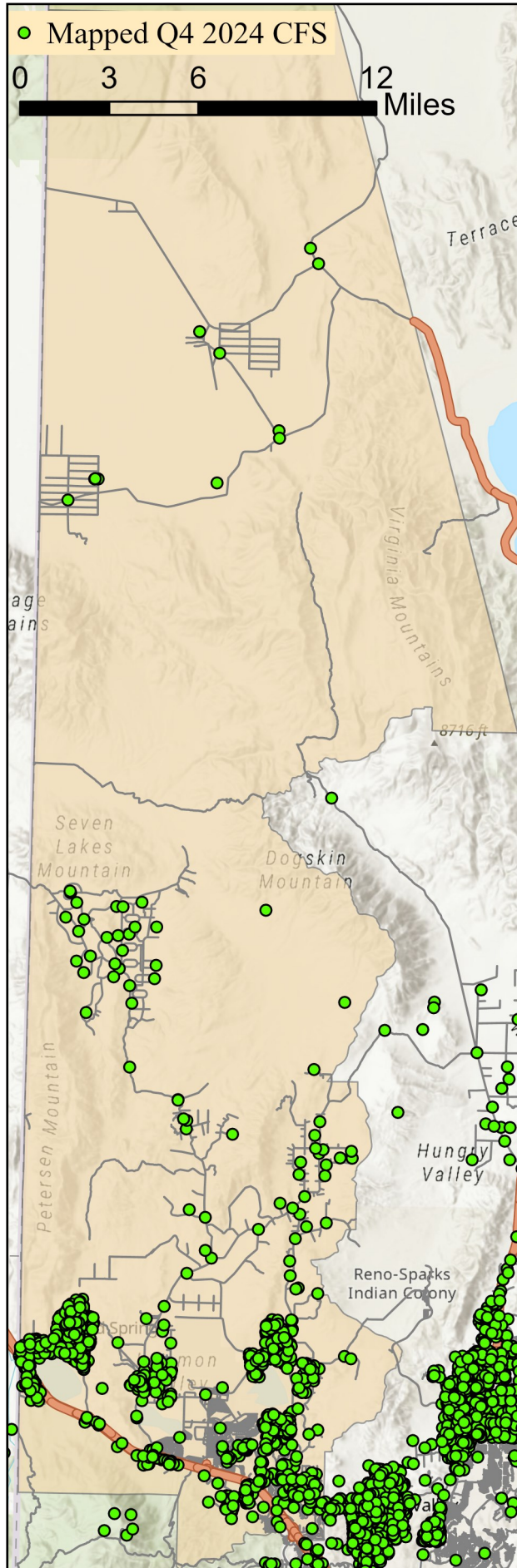
Incline Village/Crystal Bay CAB



Offense Categories	Q4	3yr Avg	Up/Down	Offense Categories	Q4	3yr Avg	Up/Down
All Other Offenses	8	9	↓	Homicide Offenses	0	0	●
Animal Cruelty	0	0	●	Human Trafficking Offenses	0	1	↓
Arson	0	0	●	Kidnapping/Abduction	0	1	↓
Assault Offenses	10	13	↓	Larceny/Theft Offenses	5	13	↓
Bad Checks	0	0	●	Liquor Law Violations	0	2	↓
Bribery	0	0	●	Motor Vehicle Theft	2	2	●
Burglary	1	2	↓	Peeping Tom	0	0	●
Counterfeiting/Forgery	1	5	↓	Pornography/Obscene Material	1	1	●
Curfew/Loitering/Vagrancy	0	2	↓	Prostitution Offenses	0	0	●
Destruction/Damage/Vandalism	2	9	↓	Robbery	0	1	↓
Disorderly Conduct	0	1	↓	Sex Offenses	1	2	↓
Driving Under the Influence	1	5	↓	Sex Offenses, Nonforcible	0	1	↓
Drug Equipment Violations	3	3	●	Stolen Property Offenses	1	2	↓
Drug/Narcotic Violations	3	4	↓	Trespass of Real Property	1	2	↓
Drunkenness	0	0	●	Weapon Law Violations	0	1	↓
Embezzlement	1	5	↓	CFS Status	Q4	3yr Avg	Up/Down
Extortion/Blackmail	2	0	↑	Dispatched	458	542	↓
Family Offenses (Nonviolent)	0	1	↓	Initiated	2,551	1,839	↑
Fraud Offenses	9	12	↓	Unspecified	515	609	↓
Gambling Offenses	0	0	●	Total	3,524	2,991	↑

Note: Initiated CFS are defined by whether the created date and time listed in the CFS match the on scene date and time entered by dispatch. Additionally, follow up and assignment CFS types are included in this category. Dispatched CFS are defined by whether an on scene time is listed in the CFS, and the CFS is not initially defined as initiated. Unspecified CFS include CFS with no on scene date and time information.

North Valleys CAB



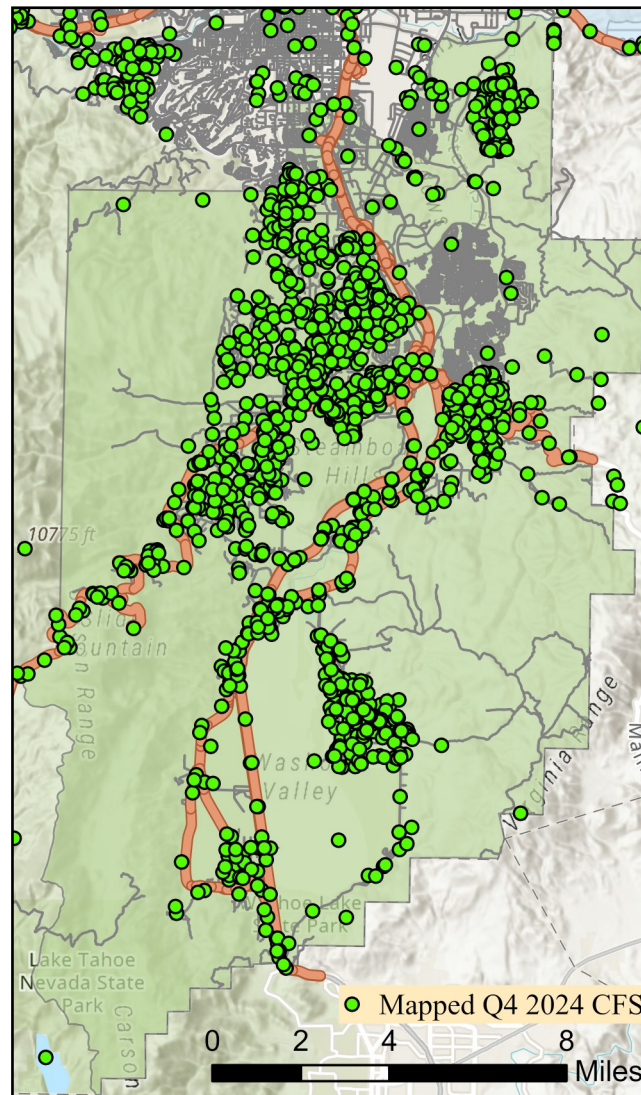
Offense Categories	Q4	3yr Avg	Up/Down
All Other Offenses	41	43	↓
Animal Cruelty	0	0	●
Arson	2	2	●
Assault Offenses	57	36	↑
Bad Checks	0	0	●
Bribery	0	0	●
Burglary	6	7	↓
Counterfeiting/Forgery	1	3	↓
Curfew/Loitering/Vagrancy	0	1	↓
Destruction/Damage/Vandalism	18	18	●
Disorderly Conduct	8	3	↑
Driving Under the Influence	12	12	●
Drug Equipment Violations	8	9	↓
Drug/Narcotic Violations	14	14	●
Drunkenness	0	0	●
Embezzlement	0	2	↓
Extortion/Blackmail	2	2	●
Family Offenses (Nonviolent)	4	8	↓
Fraud Offenses	21	25	↓
Gambling Offenses	0	0	●

Offense Categories	Q4	3yr Avg	Up/Down
Homicide Offenses	0	1	↓
Human Trafficking Offenses	0	0	●
Kidnapping/Abduction	4	2	↑
Larceny/Theft Offenses	32	22	↑
Liquor Law Violations	0	2	↓
Motor Vehicle Theft	6	4	↑
Peeping Tom	0	0	●
Pornography/Obscene Material	1	2	↓
Prostitution Offenses	0	0	●
Robbery	1	1	●
Sex Offenses	7	6	↑
Sex Offenses, Nonforcible	0	1	↓
Stolen Property Offenses	4	3	↑
Trespass of Real Property	7	3	↑
Weapon Law Violations	4	7	↓

CFS Status	Q4	3yr Avg	Up/Down
Dispatched	683	693	↓
Initiated	1,177	662	↑
Unspecified	971	749	↑
Total	2,831	2,104	↑

Note: Initiated CFS are defined by whether the created date and time listed in the CFS match the on scene date and time entered by dispatch. Additionally, follow up and assignment CFS types are included in this category. Dispatched CFS are defined by whether an on scene time is listed in the CFS, and the CFS is not initially defined as initiated. Unspecified CFS include CFS with no on scene date and time information.

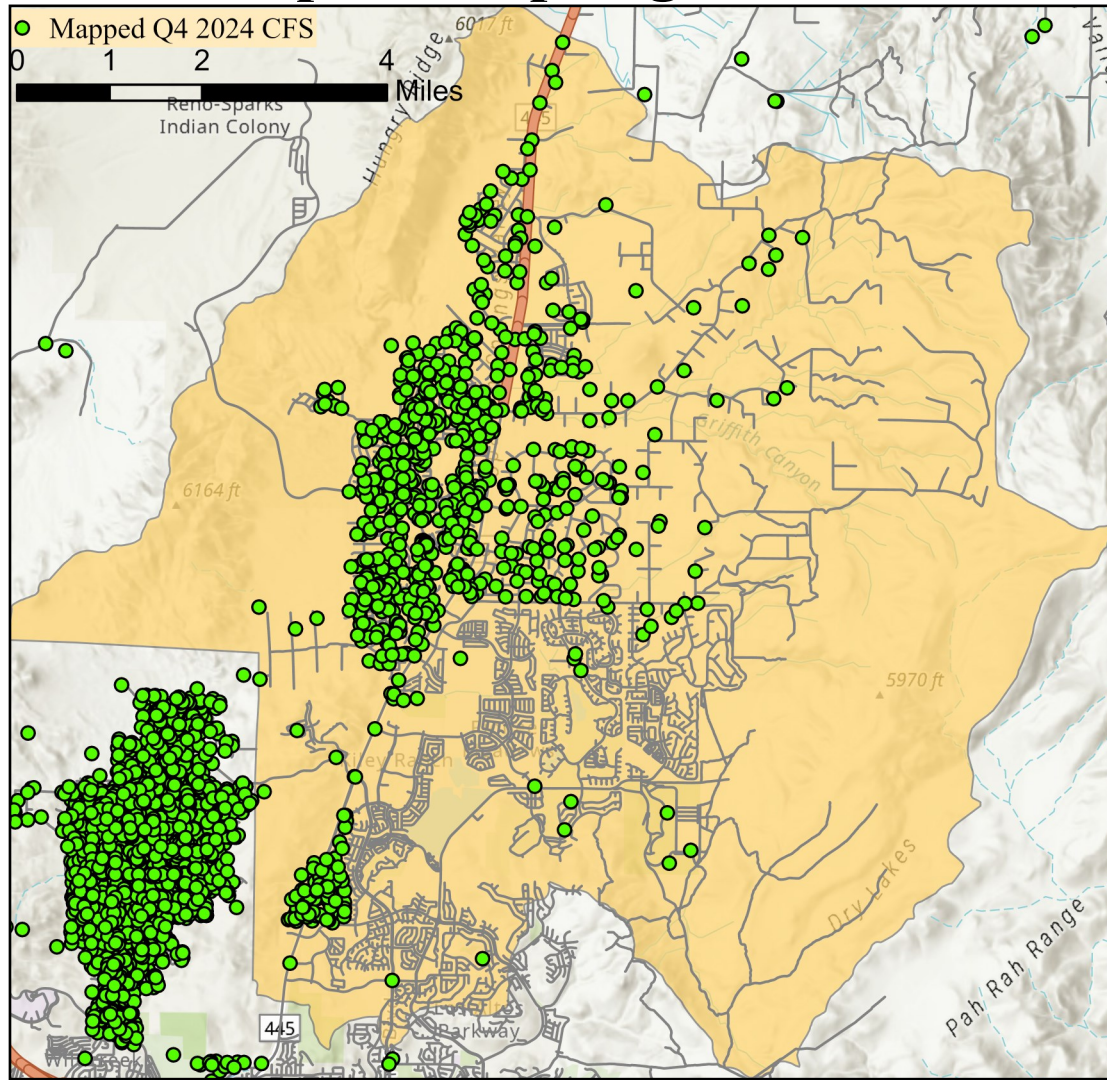
South Truckee Meadows/Washoe Valley CAB



Offense Categories	Q4	3yr Avg	Up/Down	Offense Categories	Q4	3yr Avg	Up/Down
All Other Offenses	30	28	↑	Homicide Offenses	0	0	●
Animal Cruelty	0	0	●	Human Trafficking Offenses	1	0	↑
Arson	0	1	↓	Kidnapping/Abduction	0	4	↓
Assault Offenses	17	24	↓	Larceny/Theft Offenses	32	28	↑
Bad Checks	0	0	●	Liquor Law Violations	1	0	↑
Bribery	0	0	●	Motor Vehicle Theft	4	2	↑
Burglary	8	10	↓	Peeping Tom	0	0	●
Counterfeiting/Forgery	1	3	↓	Pornography/Obscene Material	0	2	↓
Curfew/Loitering/Vagrancy	0	1	↓	Prostitution Offenses	0	0	●
Destruction/Damage/Vandalism	20	24	↓	Robbery	0	1	↓
Disorderly Conduct	2	3	↓	Sex Offenses	0	6	↓
Driving Under the Influence	10	7	↑	Sex Offenses, Nonforcible	0	0	●
Drug Equipment Violations	4	7	↓	Stolen Property Offenses	2	7	↓
Drug/Narcotic Violations	5	9	↓	Trespass of Real Property	4	4	●
Drunkenness	0	0	●	Weapon Law Violations	1	4	↓
Embezzlement	0	1	↓	CFS Status	Q4	3yr Avg	Up/Down
Extortion/Blackmail	1	2	↓	Dispatched	678	679	↓
Family Offenses (Nonviolent)	3	2	↑	Initiated	966	809	↑
Fraud Offenses	20	31	↓	Unspecified	1,345	1,095	↑
Gambling Offenses	0	0	●	Total	2,989	2,584	↑

Note: Initiated CFS are defined by whether the created date and time listed in the CFS match the on scene date and time entered by dispatch. Additionally, follow up and assignment CFS types are included in this category. Dispatched CFS are defined by whether an on scene time is listed in the CFS, and the CFS is not initially defined as initiated. Unspecified CFS include CFS with no on scene date and time information.

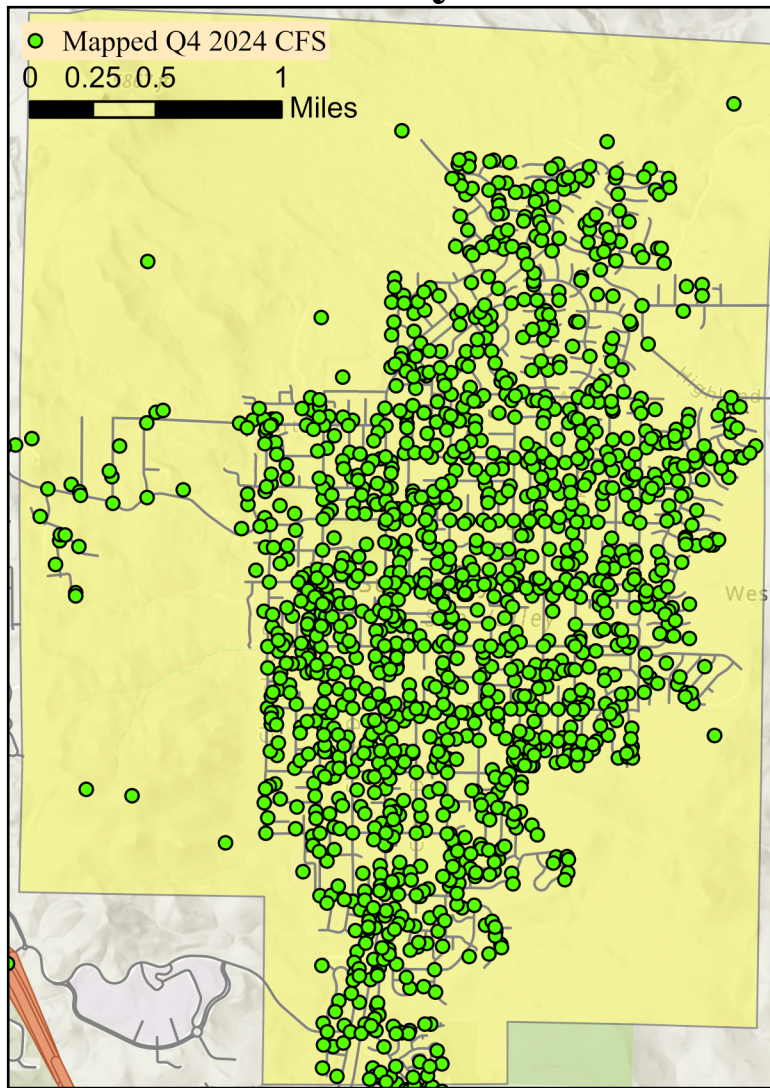
Spanish Springs CAB



Offense Categories	Q4	3yr Avg	Up/Down	Offense Categories	Q4	3yr Avg	Up/Down
All Other Offenses	16	17	↓	Homicide Offenses	0	0	●
Animal Cruelty	0	0	●	Human Trafficking Offenses	0	1	↓
Arson	0	1	↓	Kidnapping/Abduction	1	2	↓
Assault Offenses	24	23	↑	Larceny/Theft Offenses	10	16	↓
Bad Checks	0	0	●	Liquor Law Violations	0	3	↓
Bribery	0	0	●	Motor Vehicle Theft	5	2	↑
Burglary	1	4	↓	Peeping Tom	0	0	●
Counterfeiting/Forgery	0	2	↓	Pornography/Obscene Material	0	1	↓
Curfew/Loitering/Vagrancy	0	1	↓	Prostitution Offenses	0	0	●
Destruction/Damage/Vandalism	18	16	↑	Robbery	0	2	↓
Disorderly Conduct	1	2	↓	Sex Offenses	3	5	↓
Driving Under the Influence	4	3	↑	Sex Offenses, Nonforcible	0	0	●
Drug Equipment Violations	0	2	↓	Stolen Property Offenses	1	4	↓
Drug/Narcotic Violations	0	4	↓	Trespass of Real Property	3	2	↑
Drunkenness	0	0	●	Weapon Law Violations	1	1	●
Embezzlement	2	0	↑	CFS Status	Q4	3yr Avg	Up/Down
Extortion/Blackmail	2	2	●	Dispatched	425	424	↑
Family Offenses (Nonviolent)	2	4	↓	Initiated	721	362	↑
Fraud Offenses	24	23	↑	Unspecified	759	629	↑
Gambling Offenses	0	0	●	Total	1,905	1,415	↑

Note: Initiated CFS are defined by whether the created date and time listed in the CFS match the on scene date and time entered by dispatch. Additionally, follow up and assignment CFS types are included in this category. Dispatched CFS are defined by whether an on scene time is listed in the CFS, and the CFS is not initially defined as initiated. Unspecified CFS include CFS with no on scene date and time information.

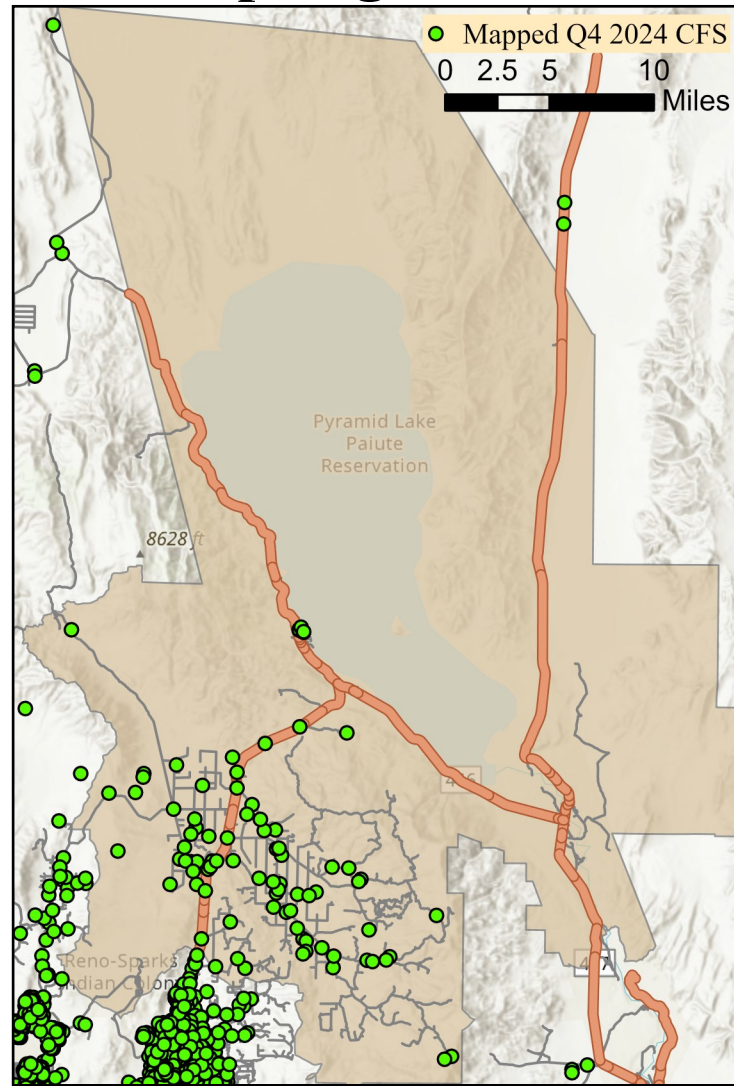
Sun Valley CAB



Offense Categories	Q4	3yr Avg	Up/Down	Offense Categories	Q4	3yr Avg	Up/Down
All Other Offenses	84	100	↓	Homicide Offenses	0	1	↓
Animal Cruelty	1	1	●	Human Trafficking Offenses	2	0	↑
Arson	2	1	↑	Kidnapping/Abduction	3	2	↑
Assault Offenses	56	50	↑	Larceny/Theft Offenses	27	30	↓
Bad Checks	0	0	●	Liquor Law Violations	1	2	↓
Bribery	0	1	↓	Motor Vehicle Theft	6	11	↓
Burglary	5	12	↓	Peeping Tom	0	0	●
Counterfeiting/Forgery	1	5	↓	Pornography/Obscene Material	3	1	↑
Curfew/Loitering/Vagrancy	0	2	↓	Prostitution Offenses	0	0	●
Destruction/Damage/Vandalism	22	27	↓	Robbery	0	1	↓
Disorderly Conduct	3	3	●	Sex Offenses	9	7	↑
Driving Under the Influence	23	19	↑	Sex Offenses, Nonforcible	0	0	●
Drug Equipment Violations	16	26	↓	Stolen Property Offenses	5	9	↓
Drug/Narcotic Violations	18	29	↓	Trespass of Real Property	5	5	●
Drunkenness	0	0	●	Weapon Law Violations	7	8	↓
Embezzlement	1	2	↓	CFS Status	Q4	3yr Avg	Up/Down
Extortion/Blackmail	0	5	↓	Dispatched	960	1,012	↓
Family Offenses (Nonviolent)	8	11	↓	Initiated	1,510	1,473	↑
Fraud Offenses	12	24	↓	Unspecified	1,137	869	↑
Gambling Offenses	0	0	●	Total	3,607	3,354	↑

Note: Initiated CFS are defined by whether the created date and time listed in the CFS match the on scene date and time entered by dispatch. Additionally, follow up and assignment CFS types are included in this category. Dispatched CFS are defined by whether an on scene time is listed in the CFS, and the CFS is not initially defined as initiated. Unspecified CFS include CFS with no on scene date and time information.

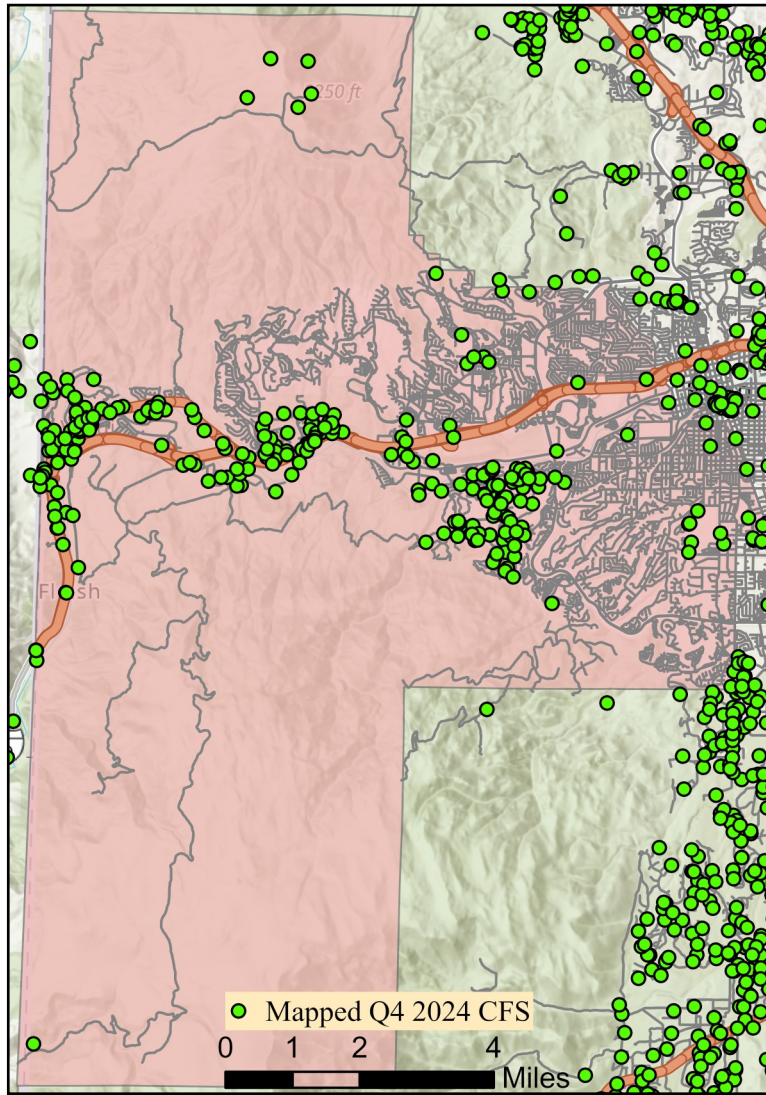
Warm Springs/Rural CAB



Offense Categories	Q4	3yr Avg	Up/Down	Offense Categories	Q4	3yr Avg	Up/Down
All Other Offenses	0	2	↓	Homicide Offenses	0	0	●
Animal Cruelty	0	0	●	Human Trafficking Offenses	0	0	●
Arson	0	0	●	Kidnapping/Abduction	0	0	●
Assault Offenses	4	2	↑	Larceny/Theft Offenses	1	2	↓
Bad Checks	0	0	●	Liquor Law Violations	0	0	●
Bribery	0	0	●	Motor Vehicle Theft	1	0	↑
Burglary	0	0	●	Peeping Tom	0	0	●
Counterfeiting/Forgery	0	0	●	Pornography/Obscene Material	0	0	●
Curfew/Loitering/Vagrancy	0	0	●	Prostitution Offenses	0	0	●
Destruction/Damage/Vandalism	1	1	●	Robbery	0	0	●
Disorderly Conduct	0	1	↓	Sex Offenses	0	0	●
Driving Under the Influence	0	0	●	Sex Offenses, Nonforcible	0	0	●
Drug Equipment Violations	0	1	↓	Stolen Property Offenses	0	0	●
Drug/Narcotic Violations	0	0	●	Trespass of Real Property	0	1	↓
Drunkenness	0	0	●	Weapon Law Violations	0	1	↓
Embezzlement	0	0	●	CFS Status	Q4	3yr Avg	Up/Down
Extortion/Blackmail	0	0	●	Dispatched	63	42	↑
Family Offenses (Nonviolent)	2	1	↑	Initiated	77	37	↑
Fraud Offenses	2	3	↓	Unspecified	102	70	↑
Gambling Offenses	0	0	●	Total	242	150	↑

Note: Initiated CFS are defined by whether the created date and time listed in the CFS match the on scene date and time entered by dispatch. Additionally, follow up and assignment CFS types are included in this category. Dispatched CFS are defined by whether an on scene time is listed in the CFS, and the CFS is not initially defined as initiated. Unspecified CFS include CFS with no on scene date and time information.

West Truckee Meadows/Verdi CAB



Offense Categories	Q4	3yr Avg	Up/Down	Offense Categories	Q4	3yr Avg	Up/Down
All Other Offenses	18	8	↑	Homicide Offenses	0	0	●
Animal Cruelty	0	0	●	Human Trafficking Offenses	0	0	●
Arson	0	0	●	Kidnapping/Abduction	1	1	●
Assault Offenses	6	4	↑	Larceny/Theft Offenses	7	12	↓
Bad Checks	0	0	●	Liquor Law Violations	0	0	●
Bribery	0	0	●	Motor Vehicle Theft	3	2	↑
Burglary	1	4	↓	Peeping Tom	0	0	●
Counterfeiting/Forgery	0	1	↓	Pornography/Obscene Material	0	1	↓
Curfew/Loitering/Vagrancy	0	0	●	Prostitution Offenses	0	0	●
Destruction/Damage/Vandalism	4	5	↓	Robbery	0	0	●
Disorderly Conduct	0	0	●	Sex Offenses	0	3	↓
Driving Under the Influence	2	2	●	Sex Offenses, Nonforcible	0	0	●
Drug Equipment Violations	2	6	↓	Stolen Property Offenses	1	3	↓
Drug/Narcotic Violations	11	9	↑	Trespass of Real Property	0	1	↓
Drunkenness	0	0	●	Weapon Law Violations	3	2	↑
Embezzlement	0	0	●	CFS Status	Q4	3yr Avg	Up/Down
Extortion/Blackmail	0	0	●	Dispatched	130	135	↓
Family Offenses (Nonviolent)	1	2	↓	Initiated	383	332	↑
Fraud Offenses	4	3	↑	Unspecified	202	164	↑
Gambling Offenses	0	0	●	Total	715	631	↑

Note: Initiated CFS are defined by whether the created date and time listed in the CFS match the on scene date and time entered by dispatch. Additionally, follow up and assignment CFS types are included in this category. Dispatched CFS are defined by whether an on scene time is listed in the CFS, and the CFS is not initially defined as initiated. Unspecified CFS include CFS with no on scene date and time information.